

MAY 6 2010

James V. Johnson

CERTIFICATE OF LOCATION OF GOVERNMENT CORNER

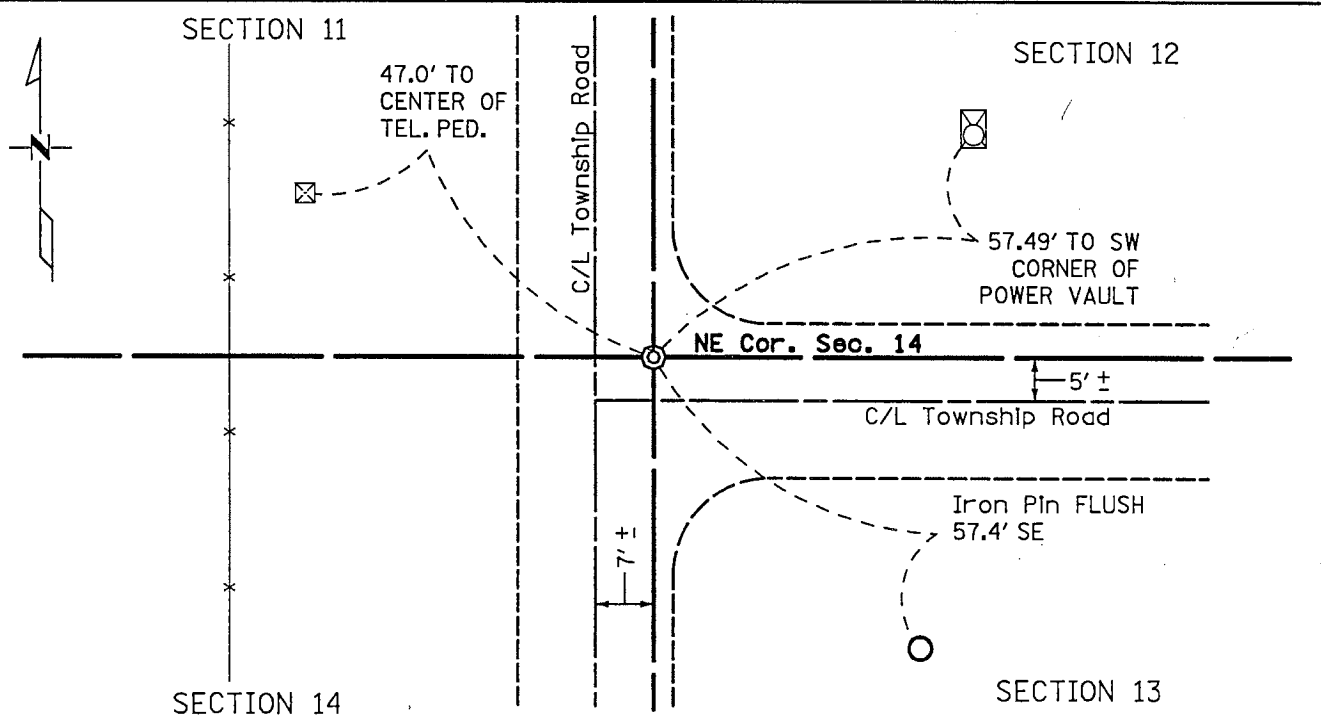
NORTHEAST Corner of Section 14, Township 107, Range 41
5th Principal Meridian, State of Minnesota, County of MURRAY

At the corner location shown on the sketch:

On JULY 27, 2009 found an 1 1/4" PIPE W/CAP #11943
DATE

left monument as found lowered monument removed monument (explain)

On _____ placed a _____
DATE



Statement of evidence for this corner location is on back of this page.

I hereby certify that this document was researched and prepared by me or under my direct supervision.

Signature Matthew Schlager Date 4-26-2010 License No. 24640

Title: Land Surveyor Professional Engineer County Surveyor County Engineer

Certificate of Location of Government Corner

Northeast Corner, Section 14, Township 107 North, Range 41 West

July 2009

A Mn/DOT survey crew, (crew chief Jeff Balbach) found a 1 ¼" iron pipe with a plastic cap stamped 11943 (Lyle E Moseng). The iron pipe is in the same position of the MnDOT cast iron monument set by Robert C Jones in 1981. The chain ties were updated.

For a more complete history of this corner, refer to the Certificate of Location of Government Corner Document Numbered 166210 filed with the Murray County Recorder on September 9, 1982.